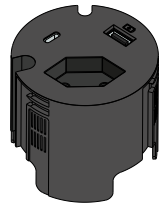


 935-PD56W

 935-PD56

## CONTENT:



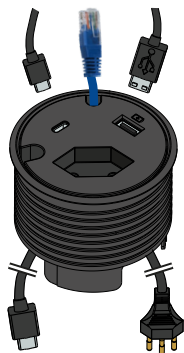
x1



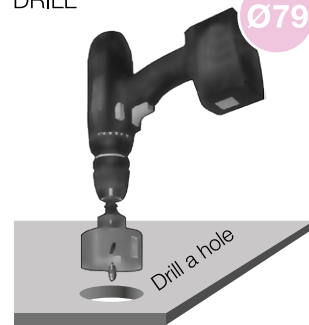
x1



x1

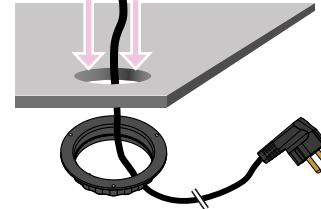
- 1 USB Charger  
QC2.0 (Type-A)- 1 Swizz socket  
/w 1250 mm cable- 1 USB Port  
(Type-C Female)  
/w 1000 mm cable- 2 feed-throughs  
(Ø7, Ø9,5 mm)

### 1 DRILL



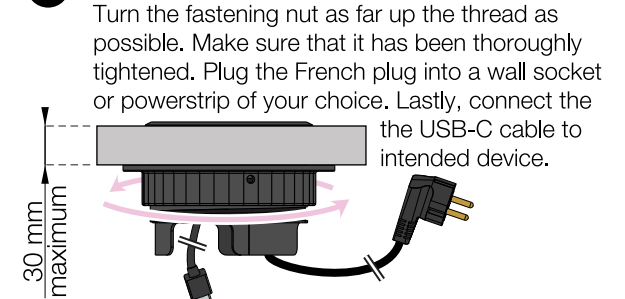
### 2 INSERT

Insert grommet into the hole, then feed the plug all the way through the threaded fastening nut.



### 3 TURN CLOCKWISE & PLUG IN

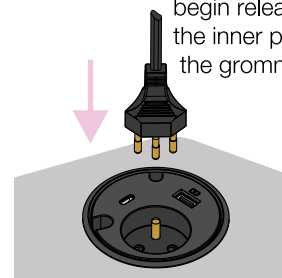
Turn the fastening nut as far up the thread as possible. Make sure that it has been thoroughly tightened. Plug the French plug into a wall socket or powerstrip of your choice. Lastly, connect the USB-C cable to intended device.



**Note!** The fastening nut has 3 holes for fixing with wood screws.

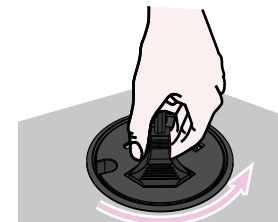
### A ADJUSTING HEIGHT

Connect plug to Powerdot to begin releasing the inner part of the grommet.



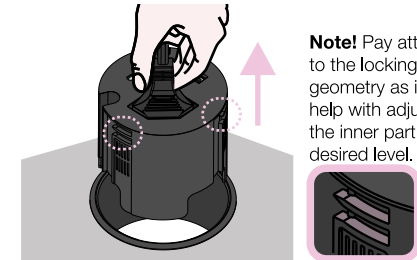
### B RELEASE INNER PART

Rotate plug counter-clockwise to release the inner part.



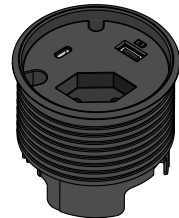
### C ADJUSTING HEIGHT

The inner part should now be loose. Adjust to desired level - see box: ADJUST LEVELS



### ! ADJUST LEVELS

Level 2 must be used when combined with the decorative accessories.



LEVEL 1  
0 mm / Flat

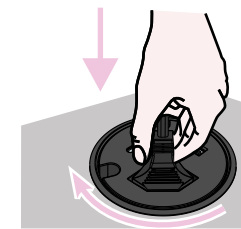
68

LEVEL 2  
-6 mm / Sunk

74

### D LOCKING POSITION

Rotate clockwise.



### E LOCKING POSITION

Rotate clockwise.

